



**FINAL RANDOM
INSPECTION(FRI)
OR
PRE-SHIPMENT
INSPECTION(PSI)**

What is Final Random Inspection (FRI)?



Here in this presentation,
We explained about FRI
briefly.

CONTENT

BACKGROUND

- QUALITY RISK / CHALLENGE
- SOLUTION

FRI

- BENEFITS OF FRI
- WHEN AND WHERE ?
- WHO IS IT FOR ?
- HOW IT TAKES PLACE ?

ASPECTS COVERED IN FRI

- QUANTITY
- PRODUCT DESCRIPTION
- WORKMANSHIP
- MEASUREMENT
- LABELING
- PACKING / PACKAGING
- ON-SITE TEST

BACKGROUND

In current Business scenario, Suppliers are rising borderless due to globalization. This globalization on one hand creates lot of opportunities, on the other throws immense quality challenges.

We have highlighted few challenges in the upcoming slide.



QUALITY RISK / CHALLENGE

- Customer complaints
- Product recalls and returns
- Brand image
- High cost of rework
- Hazard risks
- Loss of market demand
- Affects on sales and profits
- Legal implications



SOLUTION

- Better way to safeguard the quality

- Comprehensive quality checks (FRI, DPI, etc.,)
- Effective risk management tools
- Quality score cards
- Real time quality analysis
- Choosing Trustworthy partners
- Quality assurance certificate
- Streamlined corrective actions



WHAT IS FRI ?

- FRI is an Onsite random inspection to verify, if bulk meets approved quality / contract requirements.
- International standards of sampling methods generally used are MIL – STD 105 E, ISO 2859, BS 6001, ANSI/ASQ Z1.4
- Verification of products includes (but not limited to)
 - a) Quantity
 - b) Visual quality consistency
 - c) Functional property



The inspectors should be well trained, skilled and expert in respective particular product / field of Inspection.

BENEFITS OF FRI

It helps to

- Know the % of defective products present in shipment.
- Reduce in Import risk.
- Protect brand image and reputation.
- Refuse defective shipment.
- Avoid unexpected costs and delays.
- Save time and secure your business.
- Facilitate rework easily at manufacturing facility (IF Required).



WHERE AND WHEN FRI ?

- FRI takes place when 100% of the goods are produced and at least 80% of order quantity is packed.

- FRI takes place in
 - # Manufacturing factory
 - (or)
 - # Shipping warehouse
 - (or)
 - # Forwarder's premises



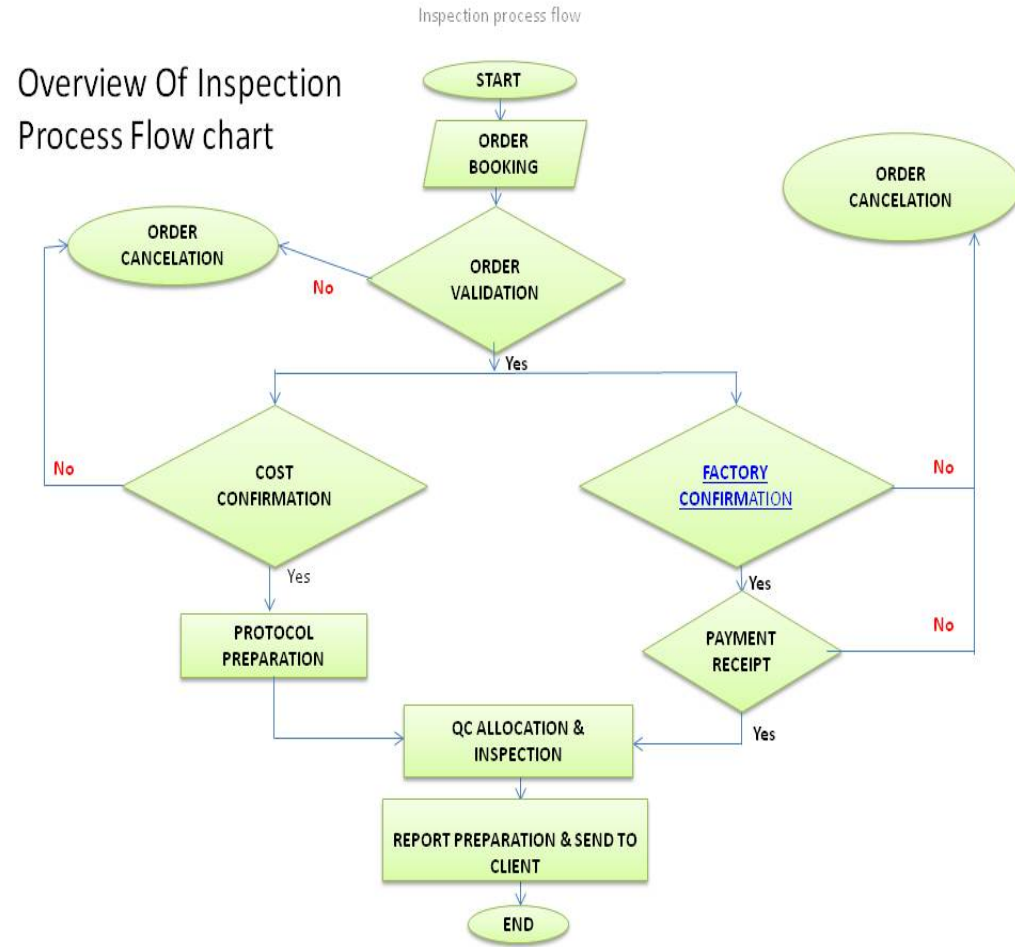
WHO IS IT FOR ?

- RETAILERS
- IMPORTERS
- WHOLESALERS
- BRAND OWNERS
- BUYING OFFICE
- TRADING COMPANY
- E-COM
- EXPORTERS
- MANUFACTURERS



HOW FRI TAKES PLACE?

- Buyer / Purchaser initiates FRI through Inspection booking.
- 3rd party / agent QC / buyers representative coordinates with factory.
- The inspection takes place after factory confirmation. ([click here for more information](#))




ASPECTS COVERED IN FRI

- Quantity check
- Product description
- Workmanship
- Measurement
- Labeling
- Packing / package method
- On-site tests

RSJ Inspection™ Service Pvt. Ltd.
Complete QC Solutions

Report # RBJ -Main Report.

EXECUTIVE SUMMARY SECTION

RSJ Report #	RSJ-		
Client Name			
Buyer Name			
Factory	ABC apparel		
Inspection Location			
Attn:			
CO:			
Service Performed:	Final Random Inspection		
Inspection Date			
P.O #			
Product Description	V-NECK T-SHIRT AND HOODIE	Style #	SSK-882,SSK-1088,PKG-1832
Colors Ordered	MULTI	Colors Offered	Multi
Sizes Ordered	MULTI	Sizes Offered	AAA
Order Quantity	125 DOZENS	Offered Quantity	870 DOZENS

Category	RESULT	REMARKS
A. Quantity Check	Pending	Refer special attention point # S2
B. Product Description	Pending	Refer special attention point # S3
C. Workmanship	Not Conformed	Refer special attention point # S1
D. Measurement	Pending	Refer special attention point # S4
E. Labeling / Inner Packing	Pending	Refer special attention point # S5
F. Packing / Packaging	Not Conformed	Refer special attention points # S6, S7
G. On Site Tests	Pending	Refer special attention point # S8

Inspection Standard:	ANSI/ASQ Z14 (MIL-STD-105E)		Critical	Major	Minor
Sampling Plan:	Single		AOQL:00	AOQL:2.5	AOQL:4.0
Inspection Level:	Fixed	Total Defects Found:	00	11	01
Sample Size:	125 Pieces	Maximum Defects Allowed:	00	07	10

OVERALL CONCLUSION **FAIL** (Only the client can Accept or Reject the goods)

RSJ Inspector Name / Title:	RSJ Inspector Signature / Stamp:	Date:
Mr. Sanjeet Kumar QE	Signed by:- Sanjeet	

Factory representative's Name, Title, Sign & Stamp:	Inspector's arrival time:	Inspector's departure time:
	9:46 AM	7:30 PM

RSJ Inspection™ Service Pvt. Ltd.
Block U, Building # 24/13, 2nd Floor, DLF Phase - 2, Gurgaon, Haryana. 122 010 PH: +91 124 2019200
E-Mail: contact@rsjqa.com, Website: www.rsjqa.com
RSJ-Flow-Rev:003/Rev:003 Page 1 of 27

QUANTITY CHECK

- In quantity check, inspector will inspect the product quantity against the PO & packing list.
- It helps to know the actual status of the product completion.
- shortage / excess – Help to avoid last minute surprises on correct ratio of size / SKU's.



PRODUCT DESCRIPTION

The Inspector will compare the randomly selected production merchandise with the buyer approved samples , Technical sheet, CAD etc., and checks for the product on below aspects

- Material
- Composition
- Style/Design
- Color
- Pattern



WORKMANSHIP

- Inspector verifies the appearance and functional properties of the product.
- Product defects are noted individually according to the type of defect (critical, major, minor).
- Workmanship helps to figure out the quality level of products.
- Acceptance / reject criteria defined by buyer's AQL standards.



MEASUREMENT / DATA SHEET

Here the inspector will measure the products for the following aspects

- Product Size
- Weight
- Other Specification

POINT OF MEASURE	Tol +/-	SPEC	Size : 0				
			S1	S2	S3	S4	S5
½ Bust CIRC 2cm below armhole point	1	49	+1	+0.5	+1	+1	+0.5
½ Hem Circumference	1	53	+1	+1	+0.5	+1	+1
Front full length from HPS	1	70	+1	+1	OK	+1	OK
Back full length from HPS	1	74	-1	OK	OK	-1	-0.5
Shoulder with shoulder to shoulder	0.5	33.5	-0.6	OK	+0.5	+0.3	OK
Back width 14cm from shoulder point	0.5	33.5	OK	+0.5	-0.3	OK	OK
Neck opening edge to edge	0.4	21.5	+1	OK	OK	OK	+1



And will record the findings.



LABELING

Labels such as main label, size label, wash care label, barcodes, hangtags etc., are verified for the following

Aspects

- Dimensions
- Color
- Placement
- Content
- Type of label(printed, woven, stitched, hanged)
- Regulatory requirements

Example : - Country of Origin,

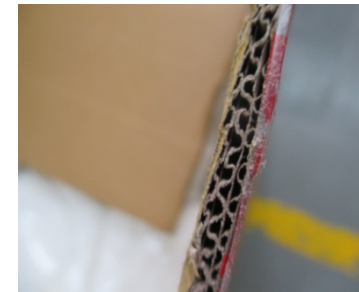
- Composition, Care instructions etc.,



PACKING / PACKAGE

In Inner packing, inspector will verify

- Inner package made-up (PP, PVC, LDPE bag, etc)
- Marks on the inner package
- Barcodes in inner package



The Outer packing/package deals

- Shipping mark
- Carton gross weight / CBM
- Carton dimension
- Carton quality



ON - SITE TEST

- Onsite test helps to check the functional property of the product.

Example: Absorbency test for towels
& Assembly test for furniture.

Some of the onsite tests are

- Barcode scan test
- Carton drop test
- Adhesive test
- Rubbing test
- Symmetry test (Pairs)



DISCLAIMER: These on-site test results are to give an approximate idea only. For accurate results these tests should be conducted in accredited laboratory.

REQUIREMENTS

Below are the details required to perform FRI efficiently

- Approved samples
- Purchase order copy
- Quantity break down
- Measurement and specification sheet
- Label and tag details
- Inner packing details
- Carton marking details
- Packaging details
- Quality manuals
- Any specific AQL to be used (Otherwise international standards - General inspection level II, AQL Critical-0.0, Major-2.5, Minor-4.0)
- Any specific quality check points to be paid more attention during inspection

USEFUL LINKS

- For further information
<https://www.rsjqa.com/inspection-services/final-random-inspection>
- To Download our service confirmation form
<https://rsjqa.com/useful-corner/downloads>

If you have any queries or need sample FRI report feel free to contact us at
finalrandominspection@rsjqa.com

We are very much happy to assist you.



THANK YOU

